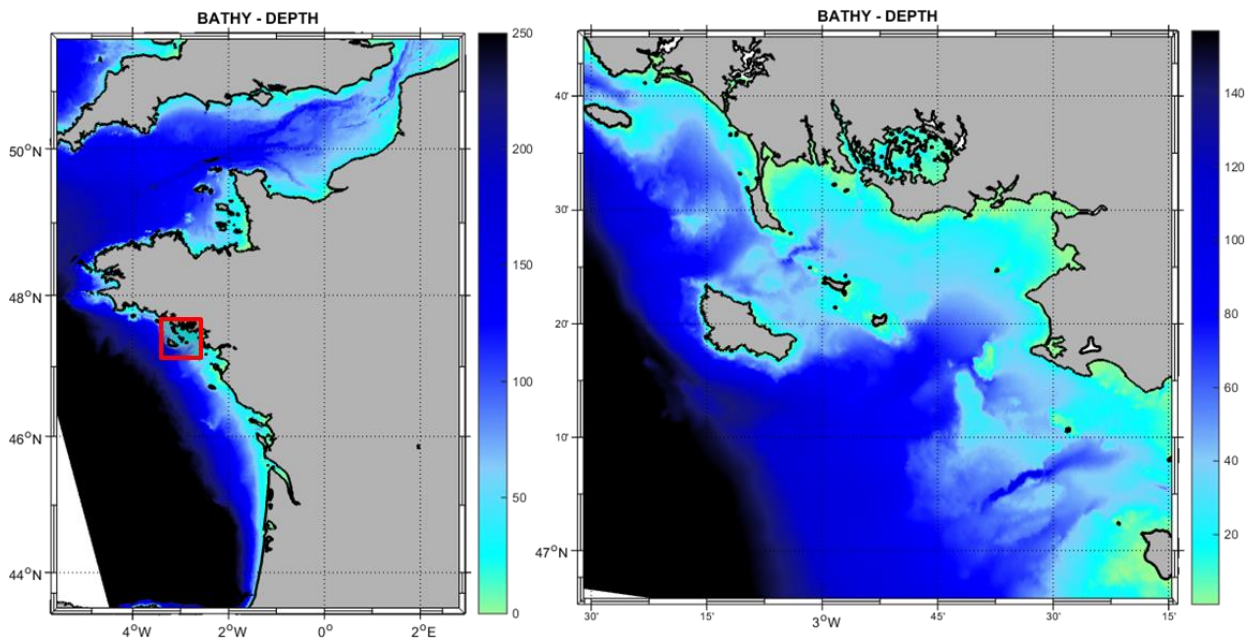


# Bathymetry (bathymetry\_maps.nc)

The bathymetry domain extends from the south of the North Sea to the North of Spain, covering the whole continental shelf. The high resolution bathymetry used in the model configuration combines data from SHOM (Service Hydrographique et Océanographique de la Marine) for the Coastline and from surveys conducted by Ifremer and SHOM for the bathymetry (at 500 to 100 m resolution). Some limited areas were corrected using specific surveys.



Example of bathymetric map produced using the data available from ([website](#)).

**Data download:** Depth numerical values can be downloaded [here](#) using standard protocols (OPENDAP, HTTP, etc.).

**Targeted end-users:** Decision makers from national to local scale, investors, utilities, scientists...

## References

- [Boudière, E., C. Maisondieu, F. Arduin, M. Accensi, L. Pineau-Guillou, and J. Lepesqueur. 2013. A suitable metocean hindcast database for the design of Marine energy converters. \*International Journal of Marine Energy\* 3-4: e40–e52.](#)
- [Dubranna, J., T. Ranchin, L. Ménard, and B. Gschwind. 2015. Production and Dissemination of Marine Renewable Energy Resource Information. \*11th European Wave and Tidal Energy Conference\*.](#)

## Contact

[Jean Dubranna](#)